



Palace Road, Brixton, SW2

1 bedroom flat - purpose built for sale

£299,950

Leasehold

Property Details

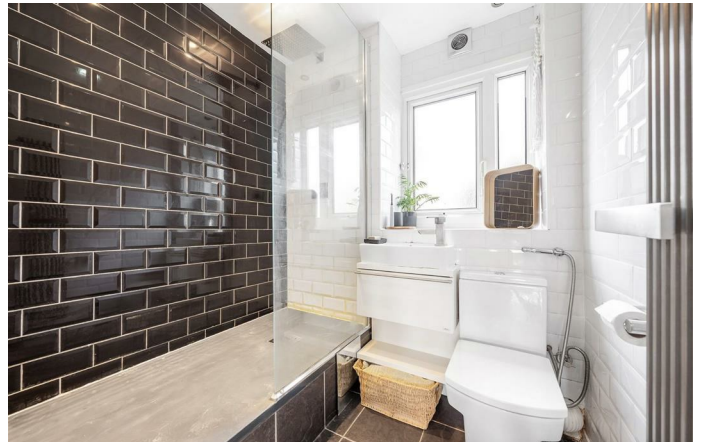
A beautifully finished one double bedroom flat with a South-facing Juliette balcony and access to a generous communal garden, set on the first floor of a peaceful low-rise building quietly tucked back from Palace Road. The home opens into a welcoming hallway with handy storage, leading to an impressive reception spanning nearly five metres. This bright, versatile space offers ample room to relax and dine, enhanced by contemporary lighting and pale engineered flooring, with large glazed doors framing views of the South-facing gardens. The Juliette balcony draws in sunshine throughout the day. The classic kitchen features shaker cabinetry, generous worktops and broad windows above the sink. Peacefully positioned to the rear, the double bedroom enjoys leafy views and fitted wardrobes, with space for a desk. The stylish bathroom includes a walk-in rain shower, monochrome tiling and useful under-sink storage. Residents share a wonderfully large South-facing garden with only three other flats, while the wide front lawn promotes a tranquil setting. Palace Road offers light traffic, with Tulse Hill and Streatham Hill stations within easy walking distance.

Council tax band C

EPC rating E (52)

Features

- One double bedroom
- South-facing Juliette balcony
- Large South-facing garden, shared with only three other flats
- Beautifully presented
- Quietly set back from the street
- Amenities in every direction
- Ten-minute walk to train station
- Strolling distance to Tulse Hill, West Norwood and Streatham High Street
- Brixton a five-seven minute bus ride
- Chain-free

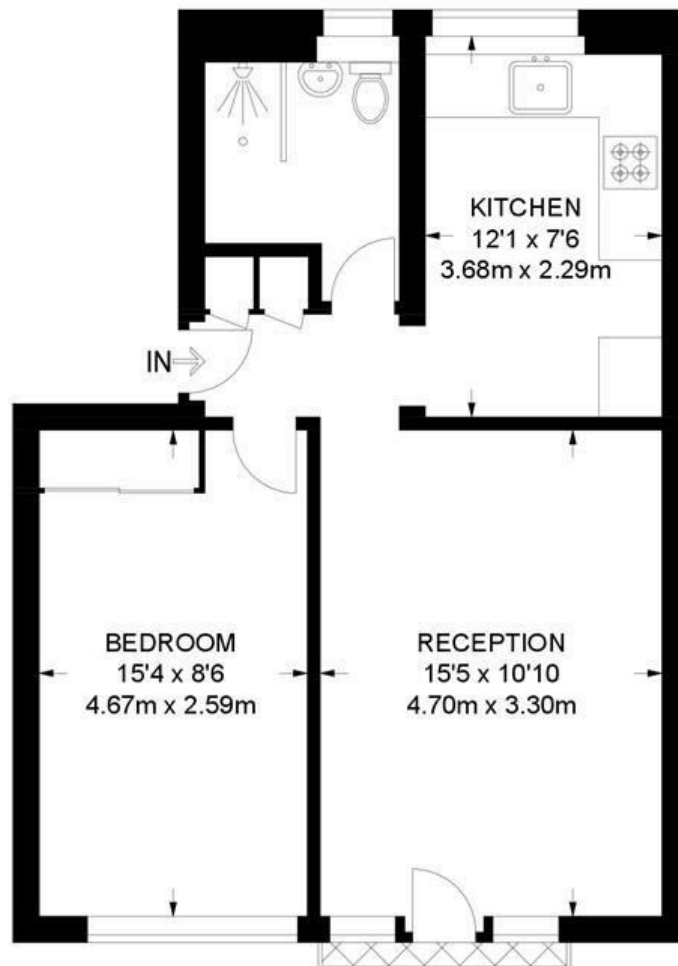


Palace Road, Brixton, SW2

Palace Road, SW2

1 Bedroom Flat

APPROXIMATE GROSS INTERNAL AREA: **486 SQ FT / 45 SQ M**



FIRST FLOOR



While we try our very best, floor plans are produced as a guide only and we take no responsibility for the precise accuracy with which any property is represented.

Palace Road, Brixton, SW2

